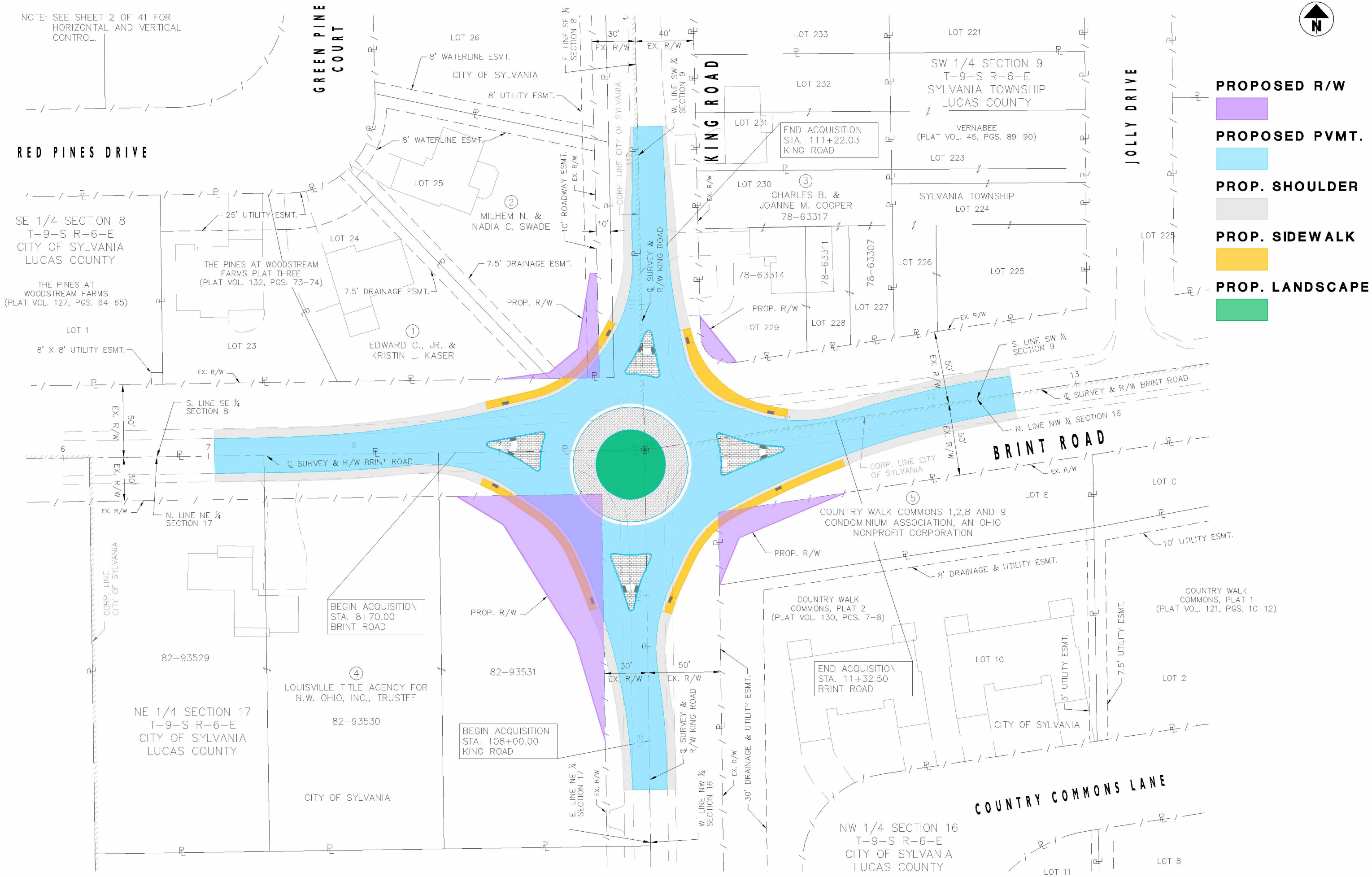




NOTE: SEE SHEET 2 OF 41 FOR HORIZONTAL AND VERTICAL CONTROL.



- PROPOSED R/W**
- PROPOSED PVMT.**
- PROP. SHOULDER**
- PROP. SIDEWALK**
- PROP. LANDSCAPE**

RED PINES DRIVE

GREEN PINE COURT

KING ROAD

JOLLY DRIVE

BRINT ROAD

COUNTRY COMMONS LANE

SE 1/4 SECTION 8  
T-9-S R-6-E  
CITY OF SYLVANIA  
LUCAS COUNTY

THE PINES AT WOODSTREAM FARMS  
(PLAT VOL. 127, PGS. 64-65)

THE PINES AT WOODSTREAM FARMS PLAT THREE  
(PLAT VOL. 132, PGS. 73-74)

MILHEM N. &  
NADIA C. SWADE

EDWARD C., JR. &  
KRISTIN L. KASER

CHARLES B. &  
JOANNE M. COOPER  
78-63317

SW 1/4 SECTION 9  
T-9-S R-6-E  
SYLVANIA TOWNSHIP  
LUCAS COUNTY

VERNABEE  
(PLAT VOL. 45, PGS. 89-90)

SYLVANIA TOWNSHIP  
LOT 224

COUNTRY WALK COMMONS 1,2,8 AND 9  
CONDOMINIUM ASSOCIATION, AN OHIO  
NONPROFIT CORPORATION

COUNTRY WALK COMMONS, PLAT 2  
(PLAT VOL. 130, PGS. 7-8)

COUNTRY WALK COMMONS, PLAT 1  
(PLAT VOL. 121, PGS. 10-12)

NE 1/4 SECTION 17  
T-9-S R-6-E  
CITY OF SYLVANIA  
LUCAS COUNTY

LOUISVILLE TITLE AGENCY FOR  
N.W. OHIO, INC., TRUSTEE

NW 1/4 SECTION 16  
T-9-S R-6-E  
CITY OF SYLVANIA  
LUCAS COUNTY